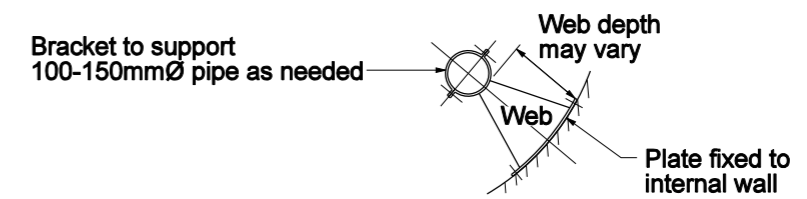
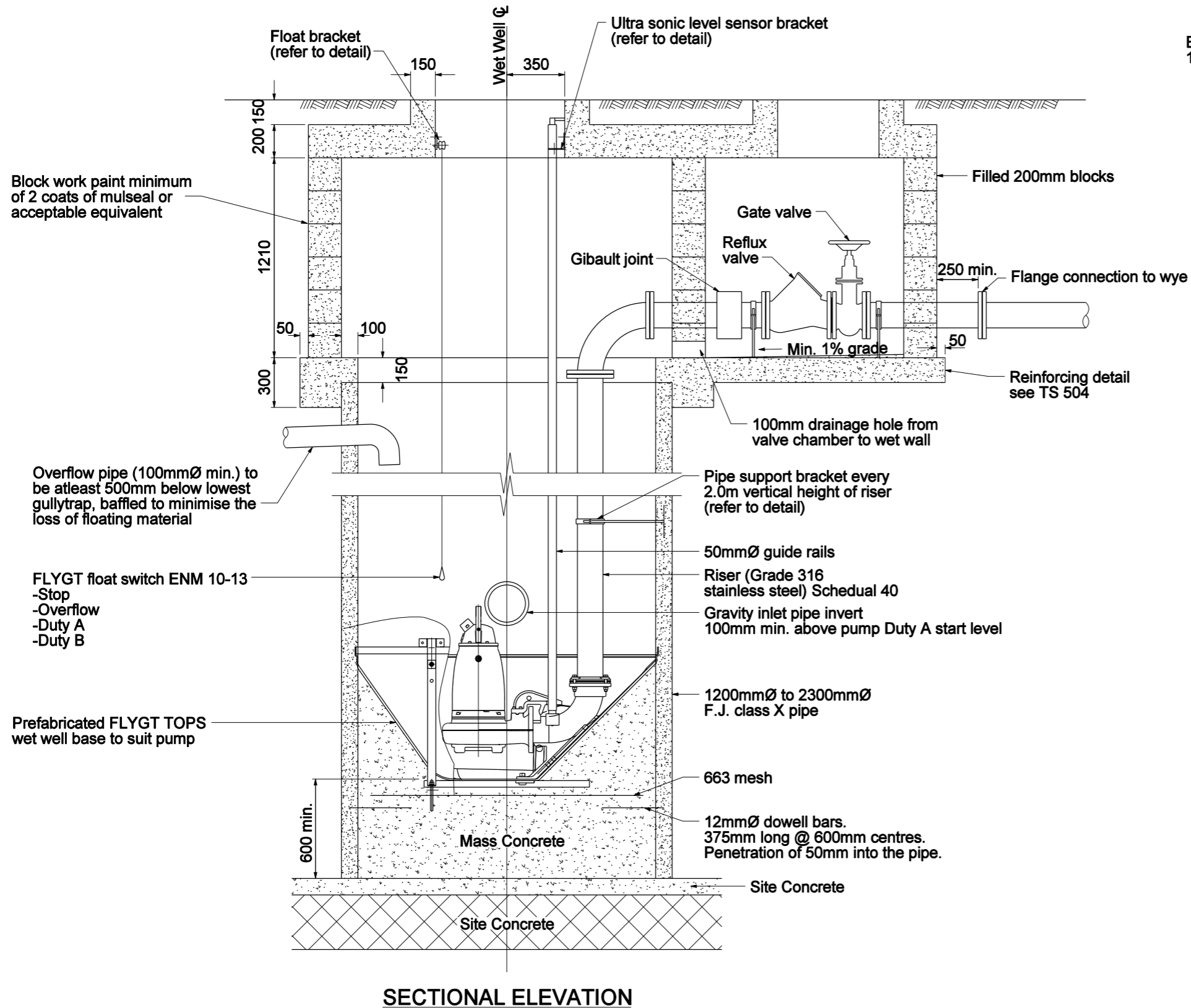
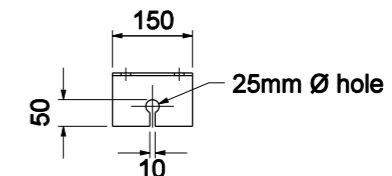


# SPS CONCRETE - SECTION

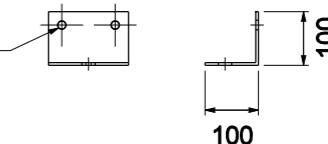


## PIPE SUPPORT BRACKET DETAIL

Construct from 5mm stainless steel

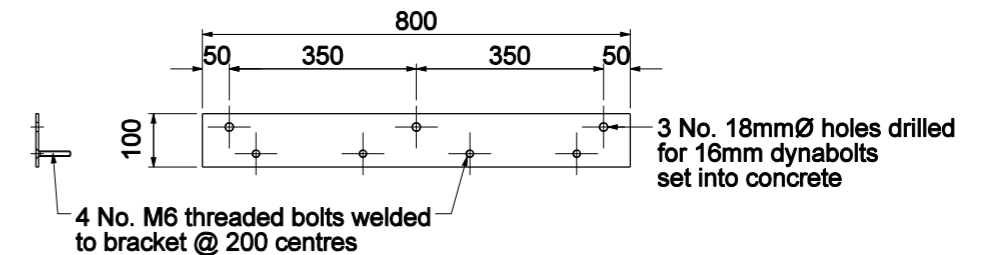


2 No. 18mm $\phi$  holes drilled for 16mm dynabolts set into concrete



## ULTRASONIC SENSOR BRACKET DETAIL

Construct from 100 x 100 x 6mm E.A. 316 stainless steel



## FLOAT BRACKET DETAIL

Construct from 5mm stainless steel

### NOTES:

1. Valve chambersized to suit valves. Prior approval of dimensions by HCC Engineer required.
2. Refer to drawing TS 504 for steel reinforcing details.