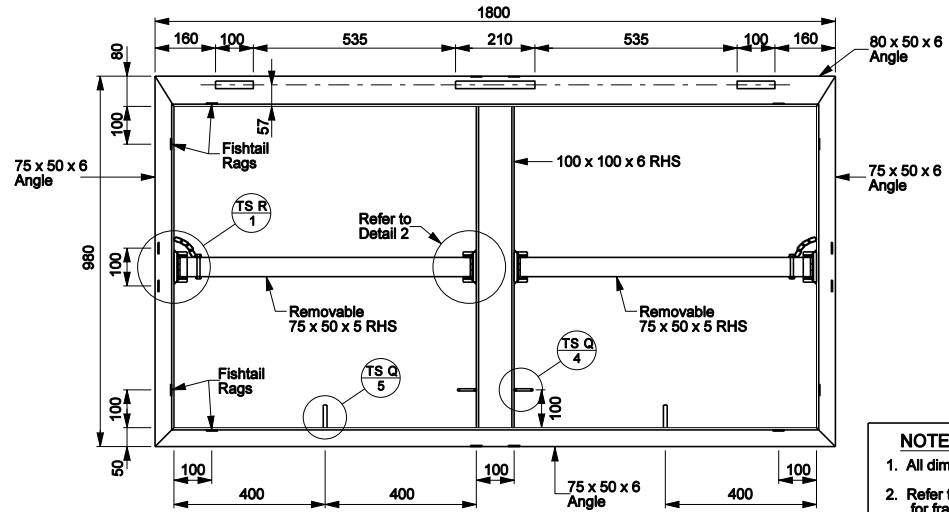
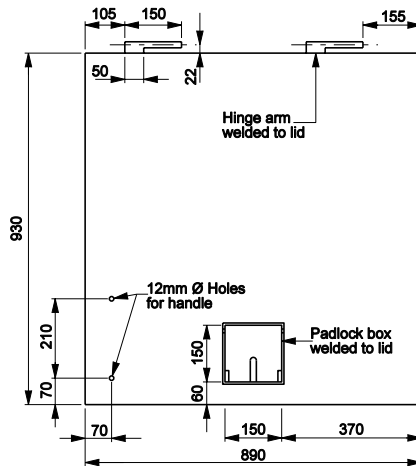


**FRAME FOR SINGLE LID**  
(3127 & 3153 Pumps and Valve Chambers)

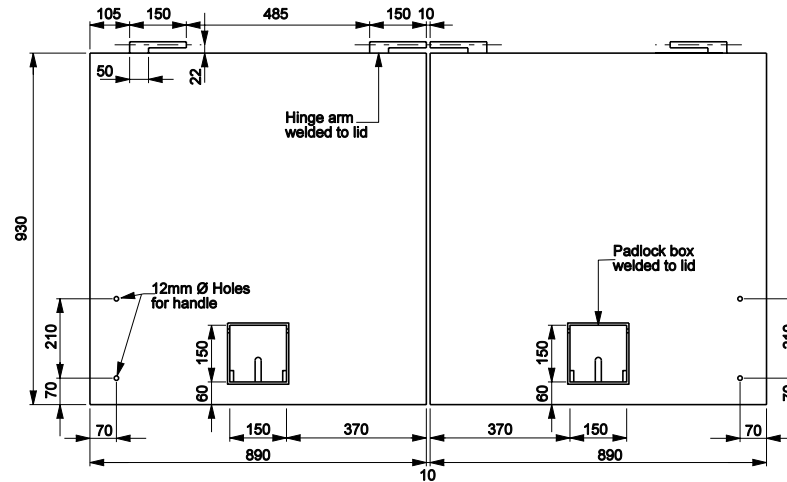


**FRAME FOR DOUBLE LID**  
(3127 & 3153 Pumps)

- NOTES**
1. All dimensions in mm.
  2. Refer to Drawings TS Q and TS R for frame details and TS S for lid details.
  3. All welds to be continuous.
  4. Frames to be 316 Stainless Steel.
  5. Lids to be 6mm aluminium checker plate.
  6. Lids and frames to be matched set.
  7. Use single lid and frame for valve chamber.
  8. Grouting lugs to be welded to frame 100mm in from each corner as shown in plan view - Refer to Detail TS R.



**SINGLE LID**  
(3127 & 3153 Pumps and Valve Chambers)



**DOUBLE LID**  
(3127 & 3153 Pumps)