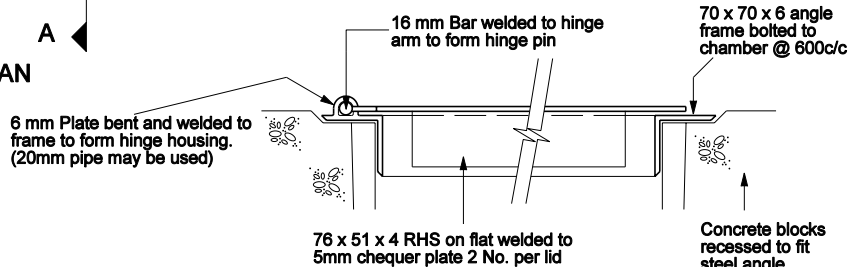
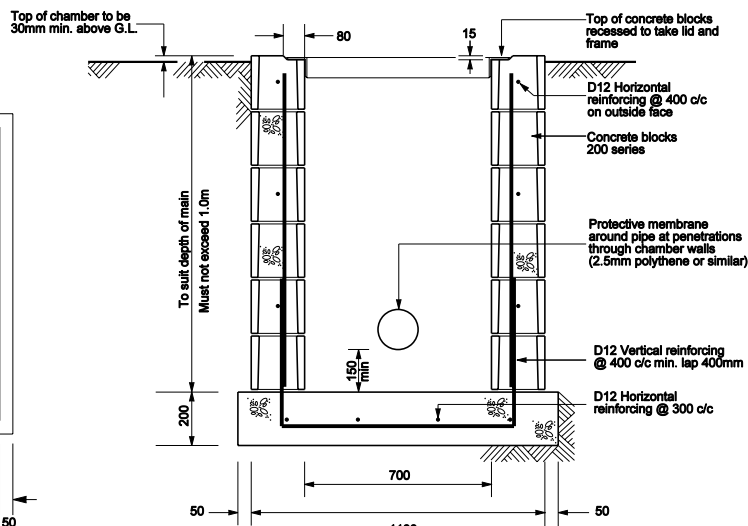


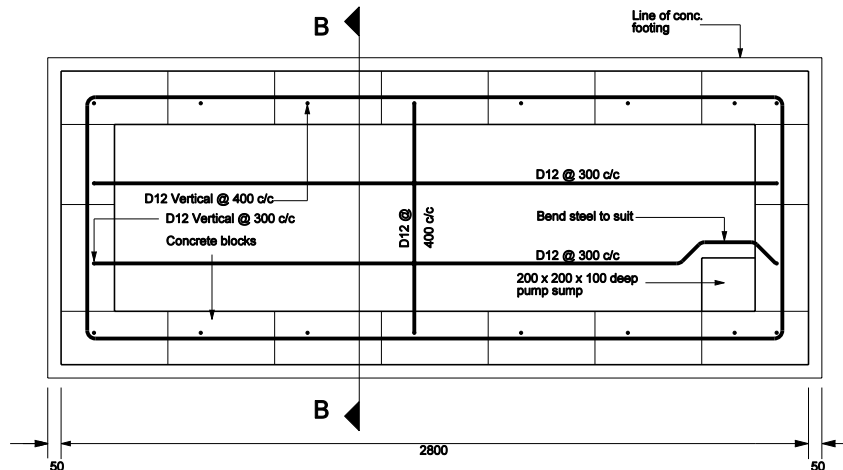
LID ASSEMBLY PLAN



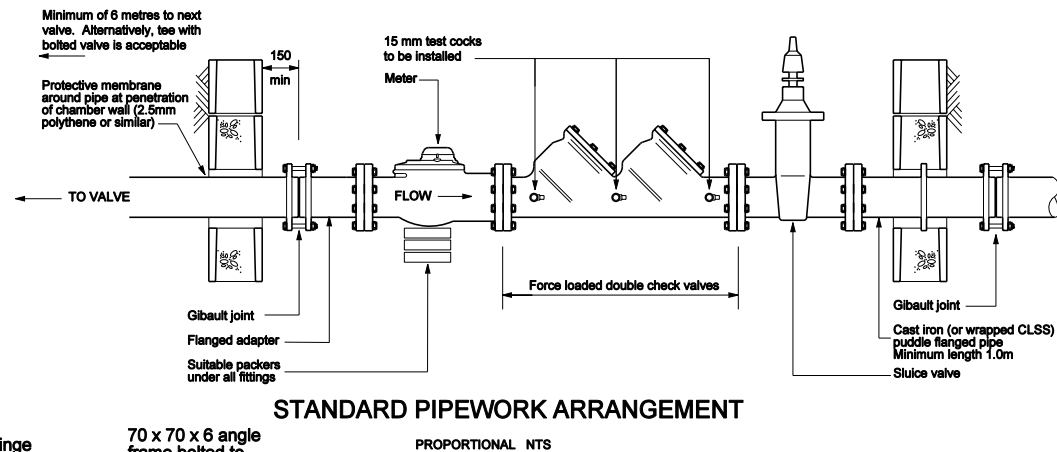
SECTION A - A
NOT TO SCALE



SECTION B - B



CHAMBER PLAN & FLOOR REINFORCEMENT DETAILS



STANDARD PIPEWORK ARRANGEMENT

PROPORTIONAL NTS

NOTES

1. PIPEWORK
 - a) Pipework shown is standard arrangement and may be altered in consultation with Water, Drainage, Refuse Office
 - b) Suitable packers to be placed under pipework.
 - c) 2 flexible joints within 2.0m of chamber both sides to counteract settlement
2. CHAMBER
 - a) Floor slab concrete to achieve 25 MPa at 28 days.
 - b) Masonry to be 200 series. All cells to be filled, concrete to achieve 17.5 MPa at 28 days.
 - c) Reinforcing to be Grade 300 in accordance with NZS 3402 1989
 - d) Minimum cover 50 mm
 - e) Area around pipe penetration through chamber wall to be filled with concrete.
 - f) Minimum 400mm laps to reinforcing steel.
3. LID
 - a) All steelwork to be hot dipped galvanised after fabrication.
 - b) All welds are 8mm continuous fillet welds.
 - c) Lids and frames to be matched set.