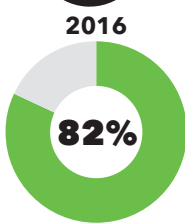


KEY HIGHLIGHTS

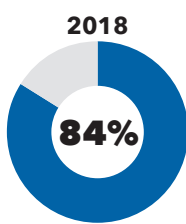


QUALITY OF LIFE

XX = 2018 8 CITIES RESULT

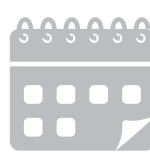


UP 2%
RATE THEIR OVERALL QUALITY OF LIFE POSITIVELY



84%

2016
32%



2018
33%

SAY THEIR QUALITY OF LIFE HAS INCREASED COMPARED WITH 12 MONTHS AGO

30%

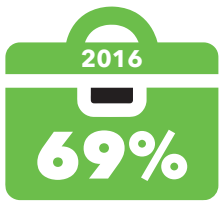
TOP 3 REASONS FOR QUALITY OF LIFE

- 1 Financial situation
- 2 Relationships
- 3 Health and wellbeing

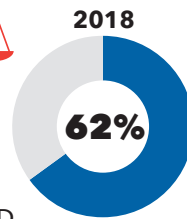
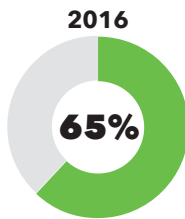


ECONOMIC WELLBEING

EMPLOYED (FULL-TIME OR PART-TIME)



71%



SATISFIED WITH WORK/LIFE BALANCE

60%

2016
43%
2018
38%

HAVE MORE THAN ENOUGH OR ENOUGH INCOME TO COVER COSTS OF EVERYDAY NEEDS

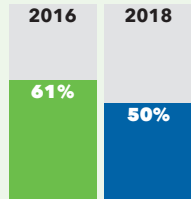
45%



HOUSING

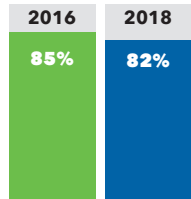
PERCEPTIONS OF HOUSING % STRONGLY AGREE OR AGREE

HOME IS AFFORDABLE



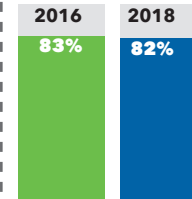
47%

LIVE IN SUITABLE AREA



84%

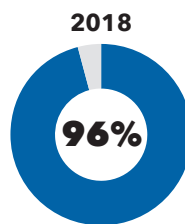
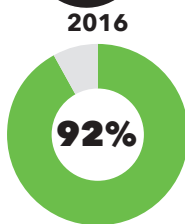
HOME IS SUITABLE



81%



HEALTH AND WELLBEING



HAVE SOMEONE TO HELP IF THEY WERE FACED WITH A SERIOUS ILLNESS OR INJURY, OR NEEDED EMOTIONAL SUPPORT

94%

2016 17%
2018 21%
ALWAYS/MOST OF THE TIME EXPERIENCE STRESS WITH A NEGATIVE EFFECT

19%

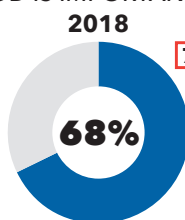
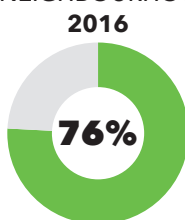
2016 NO DATA
2018 28%
HAVE A LOW SCORE ON THE WORLD HEALTH INDICATOR OF EMOTIONAL WELLBEING

30%



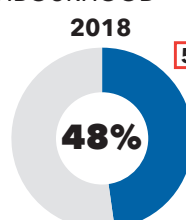
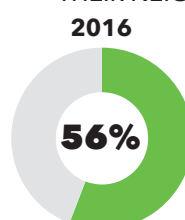
COMMUNITY, CULTURE AND SOCIAL NETWORKS

BELIEVE A SENSE OF COMMUNITY IN THEIR NEIGHBOURHOOD IS IMPORTANT



71%

FEEL A SENSE OF COMMUNITY IN THEIR NEIGHBOURHOOD



52%



KEY HIGHLIGHTS



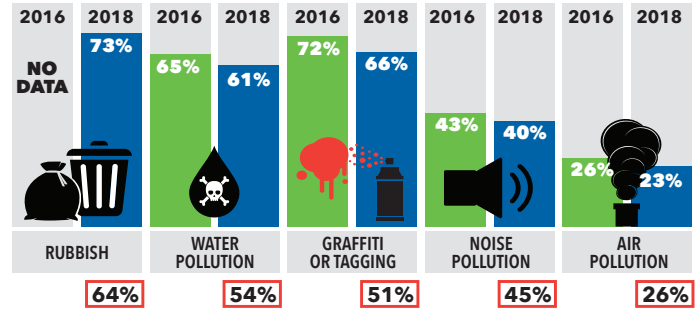
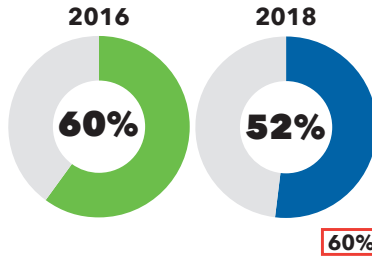
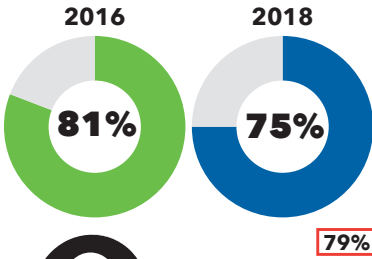
GREAT PLACE TO LIVE

XX = 2018 8 CITIES RESULT

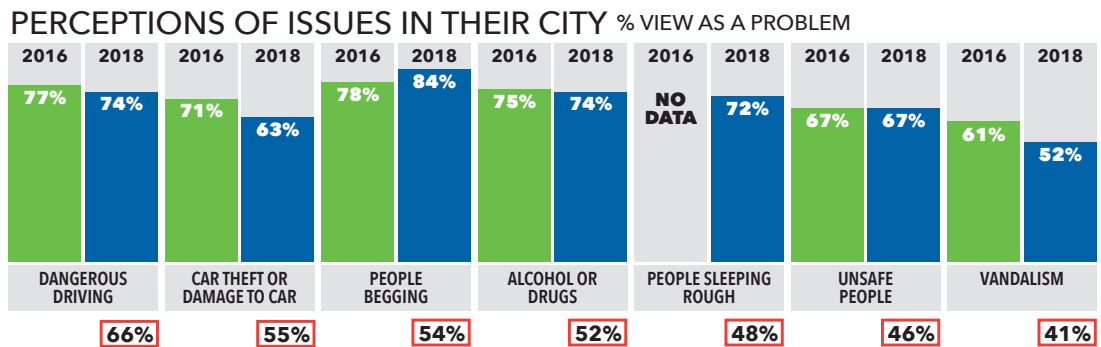
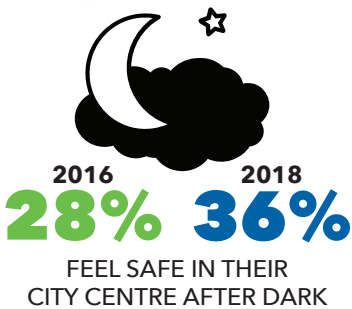
THINK THEIR CITY IS A GREAT PLACE TO LIVE

ARE PROUD OF HOW THEIR CITY LOOKS AND FEELS

PERCEPTIONS OF ISSUES IN THEIR CITY

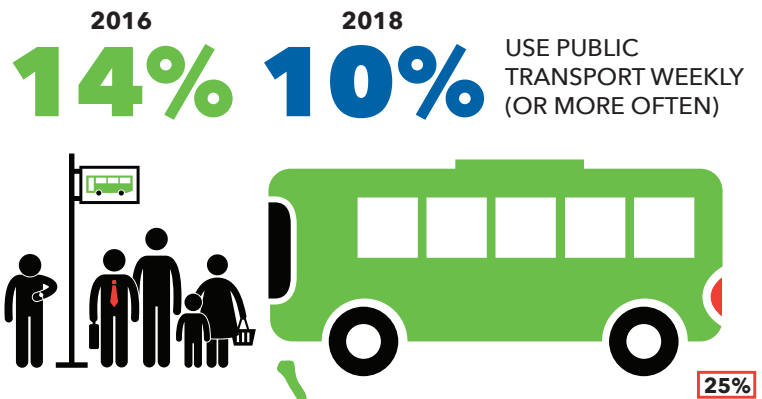
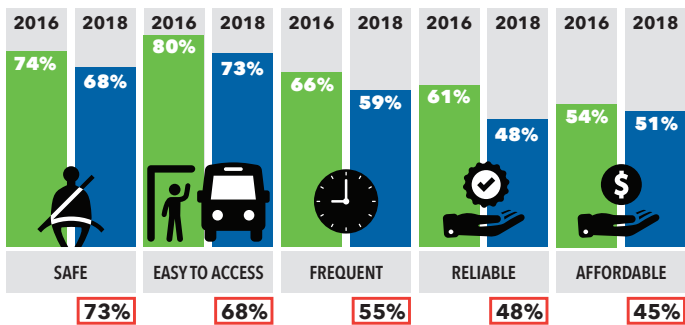


CRIME AND SAFETY



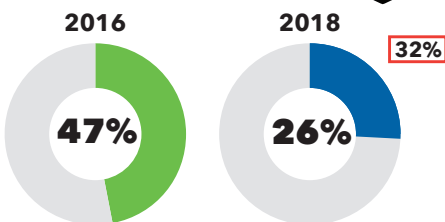
TRANSPORT

PERCEPTIONS OF PUBLIC TRANSPORT IN LOCAL AREA % STRONGLY AGREE OR AGREE

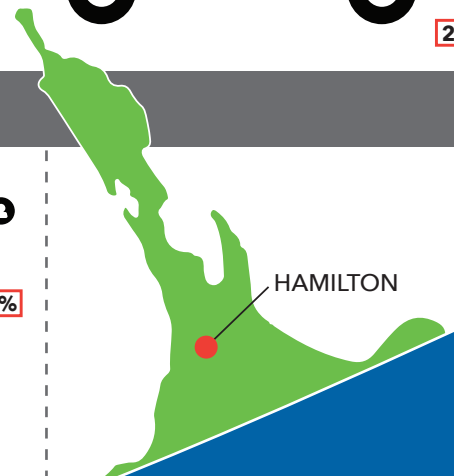
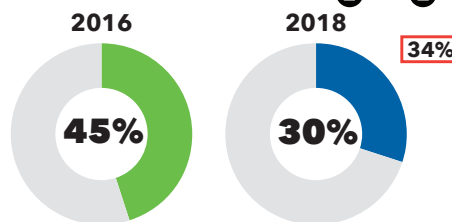


COUNCIL PROCESSES

ARE CONFIDENT IN THEIR LOCAL COUNCIL'S DECISION-MAKING



BELIEVE THE PUBLIC HAS AN INFLUENCE ON COUNCIL DECISION-MAKING



The 2018 Quality of Life survey is a partnership between eight New Zealand councils and measures people's perceptions over several domains related to quality of life. A random selection of residents from each council area were invited to participate either online or via a hardcopy questionnaire. The survey was completed by 7615 people aged 18 years and over between 10 April-3 June 2018.