

First adopted:	22 February 1994
Revision dates/version:	2005, 2012
Next review date:	November 2018
Engagement required:	No engagement required
Document number:	D-1976758
Associated documents:	Street Tree Guidelines, Infrastructure Technical Specifications
Sponsor/Group:	General Manager Community, General Manager Infrastructure Operations

Streetscape Beautification and Verge Maintenance Policy

Purpose and scope

1. To prioritise maintenance efficiency for streetscape and landscaping in the city to achieve quality streetscapes while ensuring essential utility services are protected and road user safety is maintained.

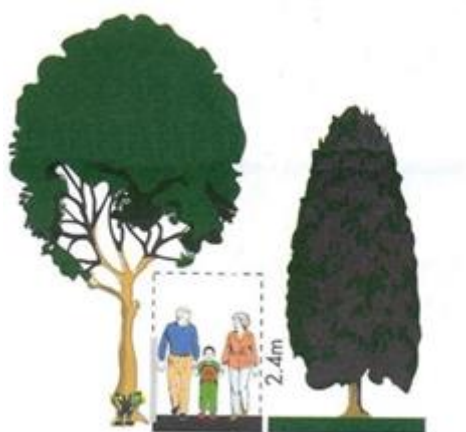
Definitions

Definition	Detail
Street	A transport corridor that provides for carriageway, verge, drainage channels and any adjoining pedestrian or cycle paths and landscaping. Includes public accessways, e.g. street to street, Civic Plaza.
Verge	That part of a street between the kerb (or edge of seal) and adjoining property boundary.

Policy

2. This Policy applies to street plantings in the city. This Policy does not apply to parks and reserves including the river corridor.
3. The priority to be applied to streetscape beautification at sites in Hamilton is defined by the classification set out in Schedules 1, 2 and 3.
 - a. Schedule 1 Level 1 Sites: a high level of amenity characterised by a mix of landscaping and planting, including bedding plants.
 - b. Schedule 2 Level 2 Sites: a medium level of amenity characterised by a mix of landscaping and planting designed for lower maintenance than Level 1.
 - c. Schedule 3 Level 3 Sites: amenity value including planting designed for low maintenance and high resilience.
4. At Council discretion some streets and/or some parts of streets will not be planted because of utility services and access requirements or traffic management requirements.
5. The location and selection of street plantings, including trees, will avoid interference on built assets (e.g. footpaths and drainage channels), utility services and traffic safety (e.g. visibility of signs).
6. Developers will be responsible for street planting in new streets. The Parks and Open Spaces Unit will approve design and implementation in accordance with Council's Street Tree Guidelines and Infrastructure Technical Specifications.
7. To conserve neighbourhood character, appropriate means of conservation will apply to significant trees and tree groups, which may include protection under the District Plan.
8. Council will remove and replace street planting in the following circumstances:
 - a. where there is a safety concern
 - b. where planting is causing severe interference with built assets e.g. footpaths

- c. where planting is causing interference with utility services e.g. electricity
 - d. where planting is in poor condition.
9. Council expects owners or residents of properties fronting onto streets to mow and maintain the adjacent verge, including drainage channels and/or plantings, excluding street trees.
 10. Council will mow verges only where:
 - a. excessive size (exceeding 200m²) or steep contour makes it unreasonable for the property owner to mow. The frequency of mowing will be at the discretion of Council
 - b. the property owner or resident does not carry out the mowing. In these cases, mowing frequency is to be restricted to not more than four times each year and only when there is a fire or vermin hazard as a result of the verge not being mown. The frequency of mowing will be at the discretion of Council.
 11. Planting on verges:
 - a. Planting on verges will not be permitted without prior written approval from Council and requests to plant verges are to be made to the City Transport Unit.
 - b. Requests for approval must have adjoining neighbour support.
 - c. Where Council approval is provided, the property owner will be responsible for ongoing maintenance to an agreed standard.
 - d. Staff are authorised to remove planting that, in Council's discretion, has not been maintained and to recover the costs associated with completing this work.
 12. Property owners will be asked, under Council supervision to remove trees and tall plantings that may cause damage to public services, or may cause a traffic hazard. If owners fail to remove the trees or planting, staff are authorised to remove them and to recover the costs associated with completing this work.
 13. The area above the full width of the footpath to a height of 2.4m is to be kept clear of overgrowth from trees, low shrubs, vines and hedges.



14. Council will notify property owners where an overhanging vegetation issue has been identified and the owner is responsible for all work required and disposal of any trimmed material. If owners fail to remove the vegetation, Council will remove it and recover the costs associated with completing this work. Where overhanging vegetation is impacting traffic safety, Council will undertake necessary work required without notifying the property owner.
15. No structures, fences or retaining walls are to be erected within the street or verge.

References

- Street Tree Guidelines
- Infrastructure Technical Specifications
- Hamilton Gateways Policy

Schedule 1 – Level 1 Sites

Central city

Garden Place/Civic Square
Victoria Street between Hood Street and London Street
City Gate
Alexandra Street

City-wide

Anzac Parade/Angelsea Street roundabout
Cobham Road/Tristram Street roundabout
Newton Road/Seddon Street roundabout
Sunshine Avenue/Te Rapa Road roundabout
Forest Lake Road/Ulster Street intersection
River Road/Endeavour Avenue roundabout
Wairere Drive/Hukanui Road roundabout
Hukunui Road/Clarkin Road roundabout
Five Cross Roads roundabout
Primary City Gateways as outlined in the Hamilton Gateways Policy

Schedule 2 – Level 2 Sites

Central city

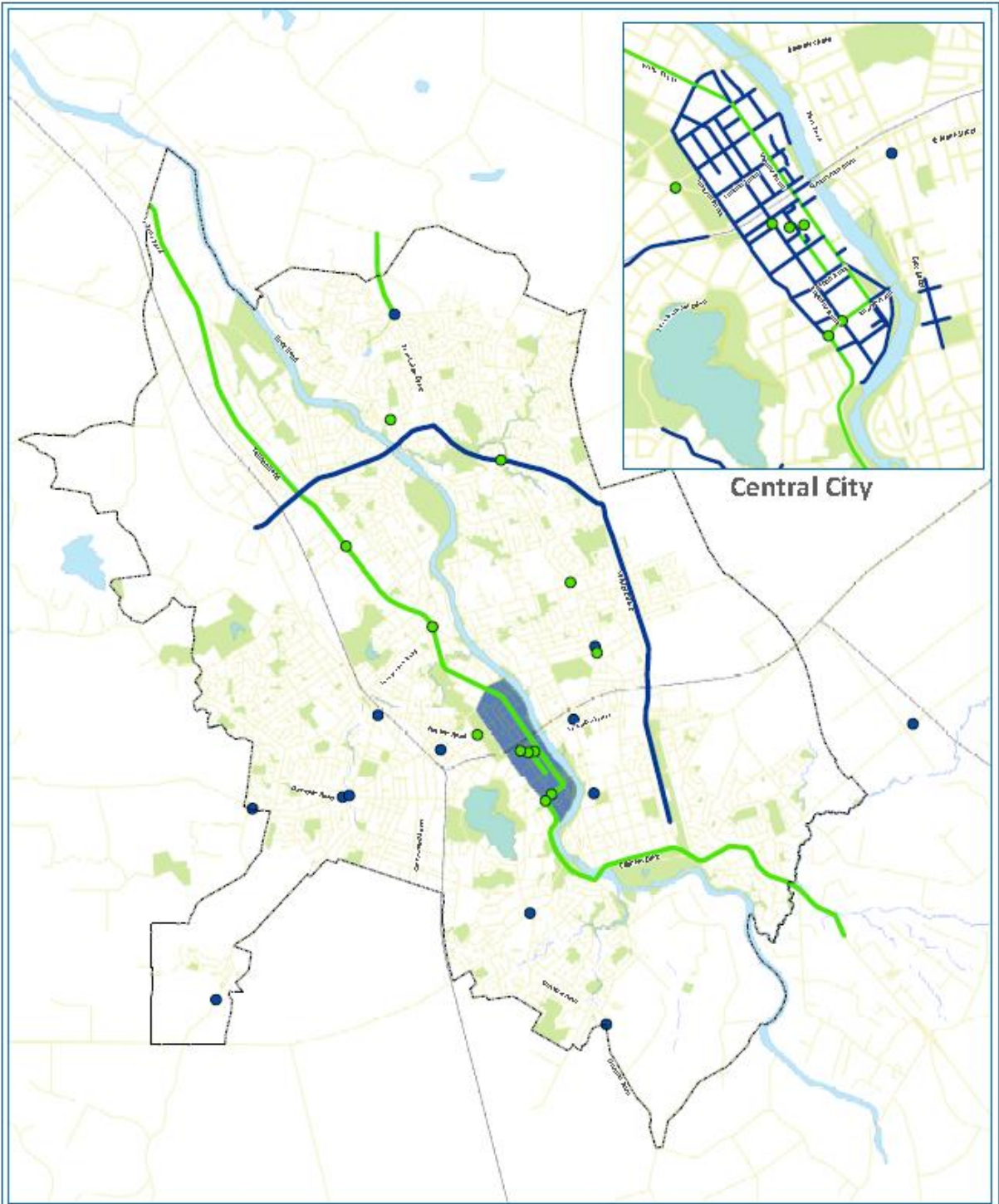
Remainder of central city streets

City-wide

Dinsdale Road/Tuhikaramea Road roundabout
Ohaupo Road/Normandy Avenue roundabout
Newton Road/Lincoln Road roundabout
Thermal Explorer Highway
Resolution Drive/Borman Road roundabout
Wairere Drive
Te Aroha Street/Grey Street roundabout
Lake Crescent
Western Rail Trail
Frankton Village
Hamilton East precinct
Dinsdale shopping precinct
Five Cross Roads shopping precinct
Secondary City Gateways as outlined in the Hamilton Gateways Policy

Schedule 3 – Level 3 Sites

All other streets and sites



Central City

KEY

Street Scapc Sites

Level 1

Level 2



GIS & CAD Services

All rights reserved. This document is the property of Hamilton City Council. It is not to be used for any other purpose without the express written consent of Hamilton City Council. All other rights reserved. This document is the property of Hamilton City Council. It is not to be used for any other purpose without the express written consent of Hamilton City Council.

HAMILTON
Streetscape Beautification sites



Trim No.
D-1988490

Version
1

Date: 20-11-18