

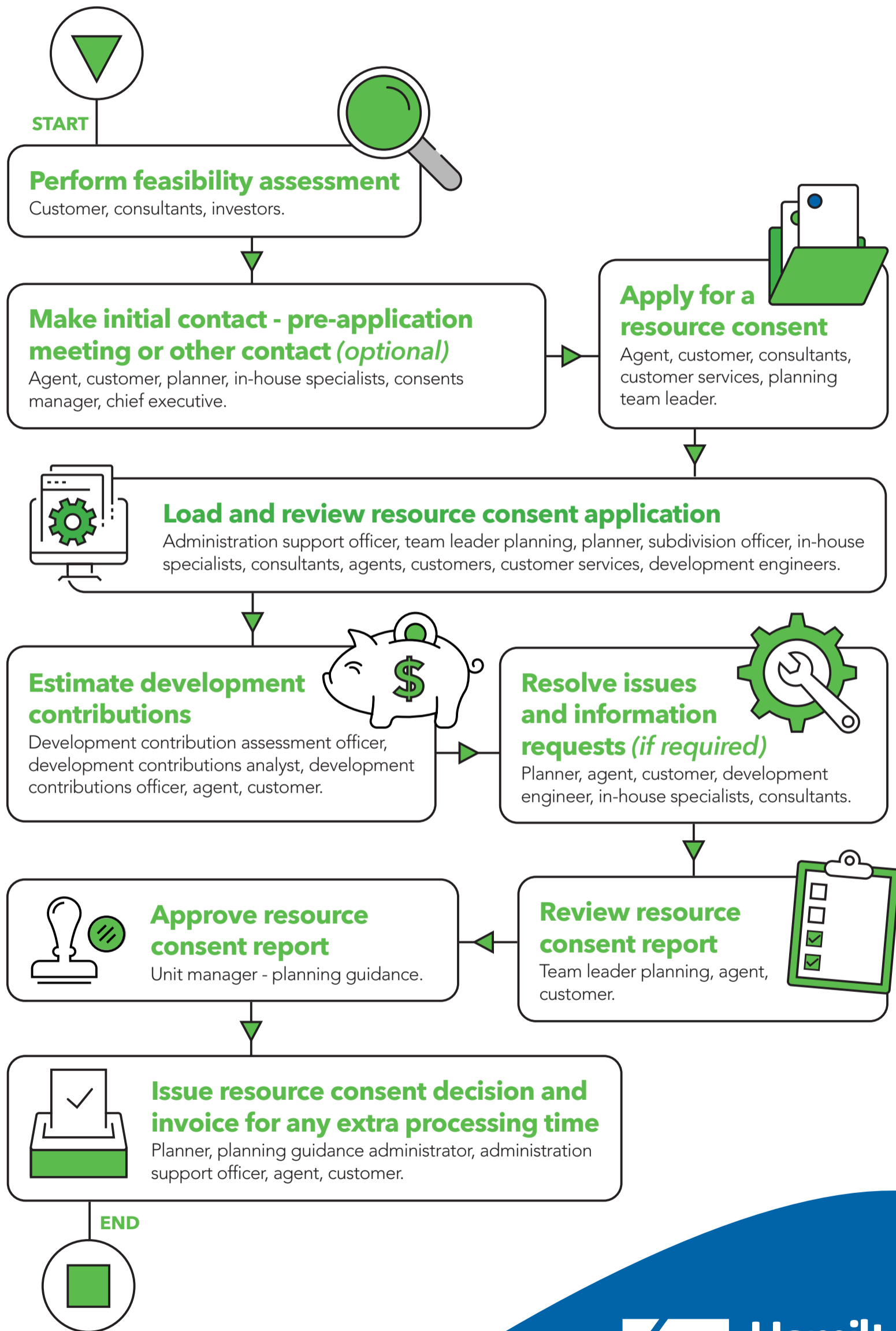
Customer Journeys

Subdividing land

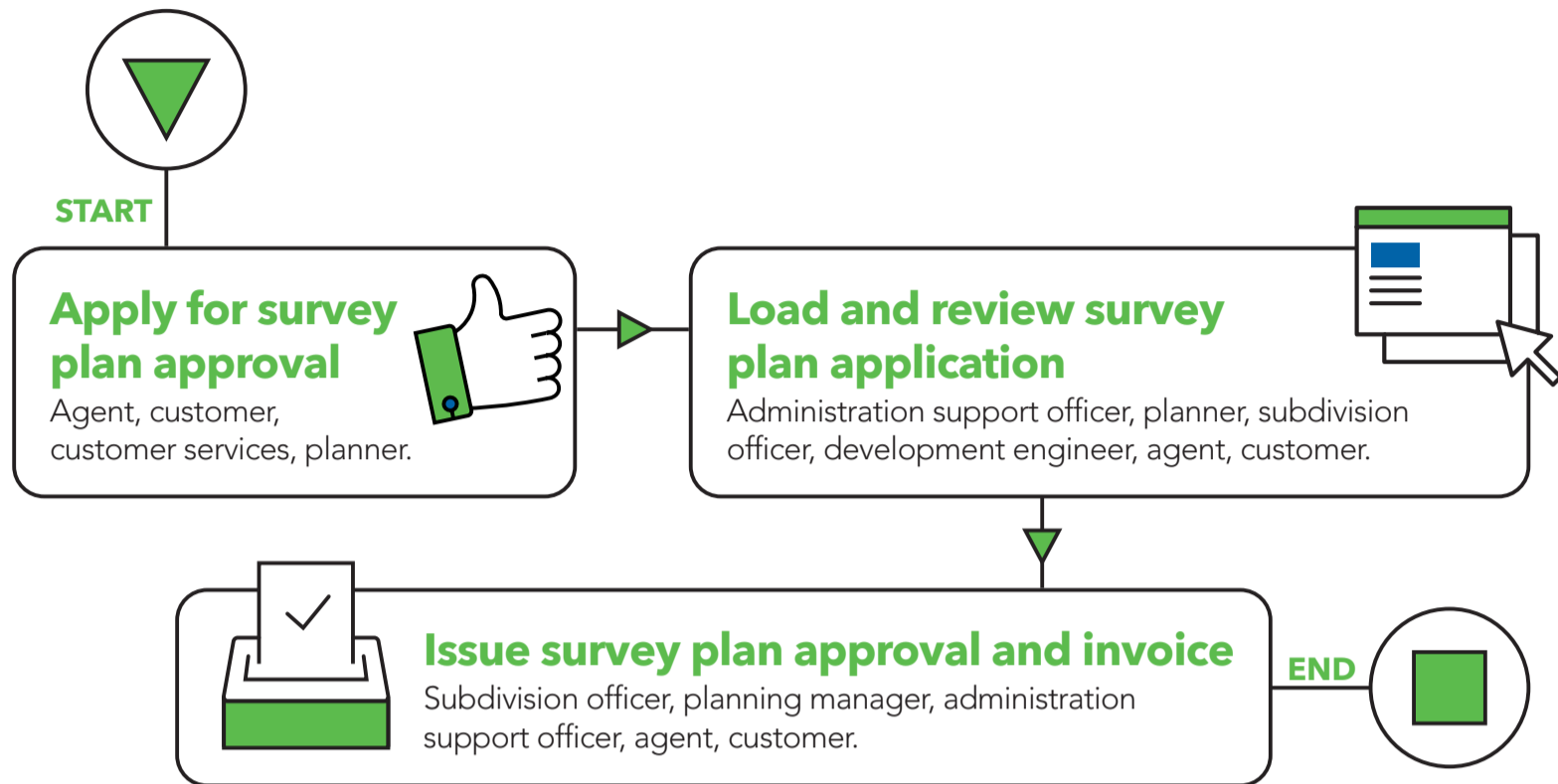
- 1 obtain subdivision resource consent
- 2 obtain survey plan approval (s223)
- 3 obtain engineering design approval
- 4 connect water, wastewater and stormwater
- 5 complete subdivision engineering work and obtain a works clearance
- 6 confirm consent compliance and obtain 224c certificate
- 7 transfer / vest assets (*if required*).



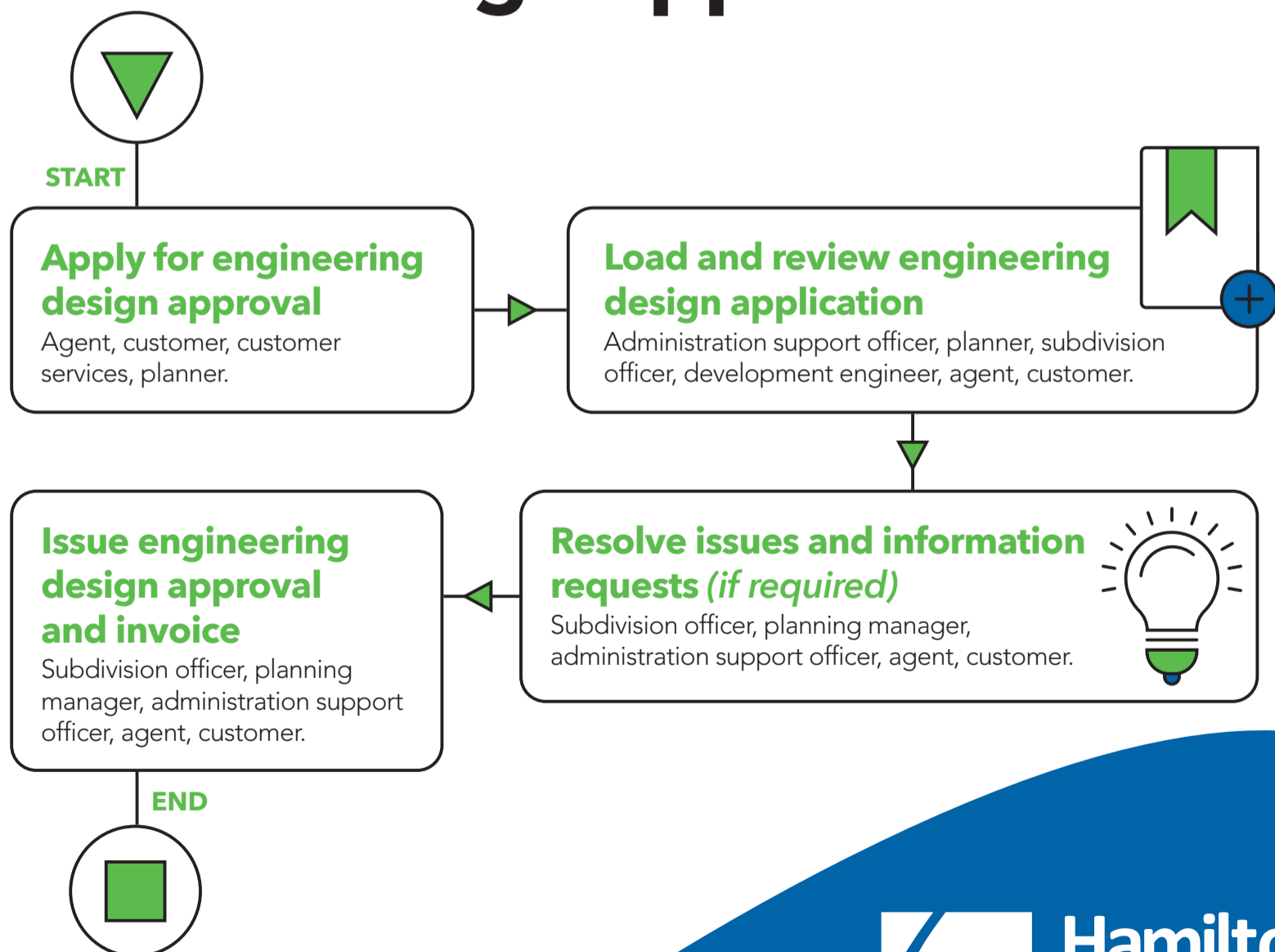
1. Obtain subdivision resource consent (*non-notified*)



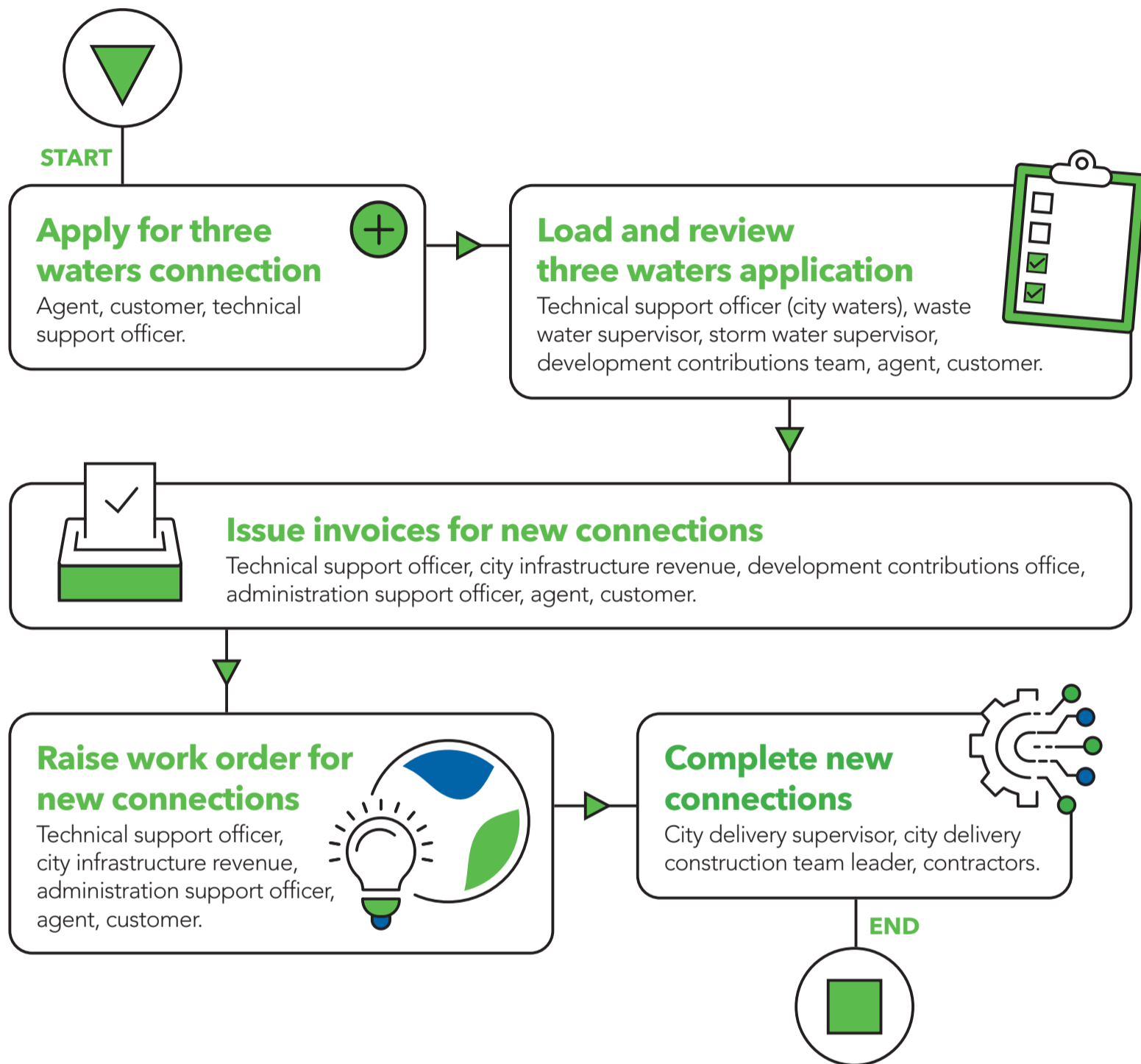
2. Obtain survey plan approval (s223)



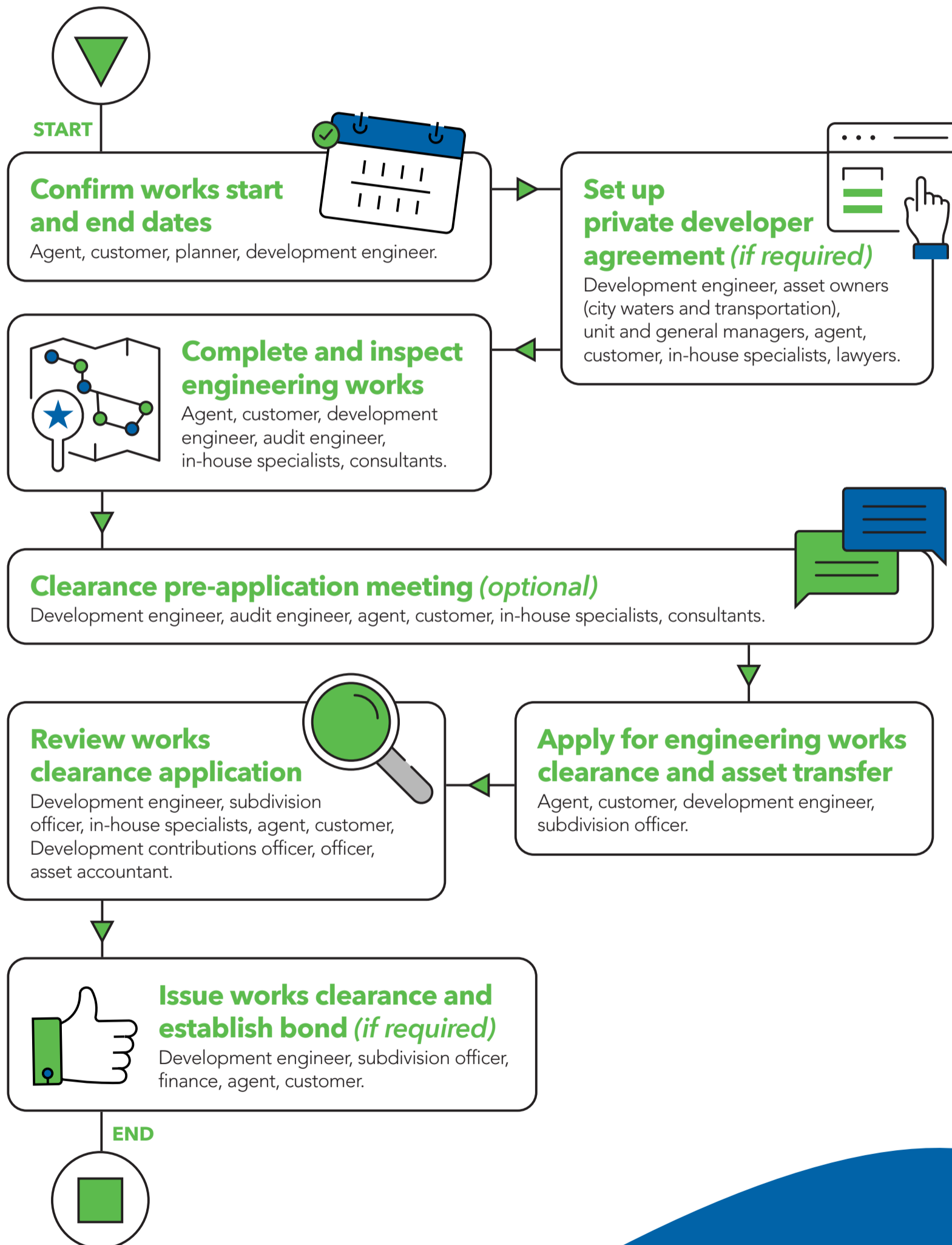
3. Obtain engineering design approval



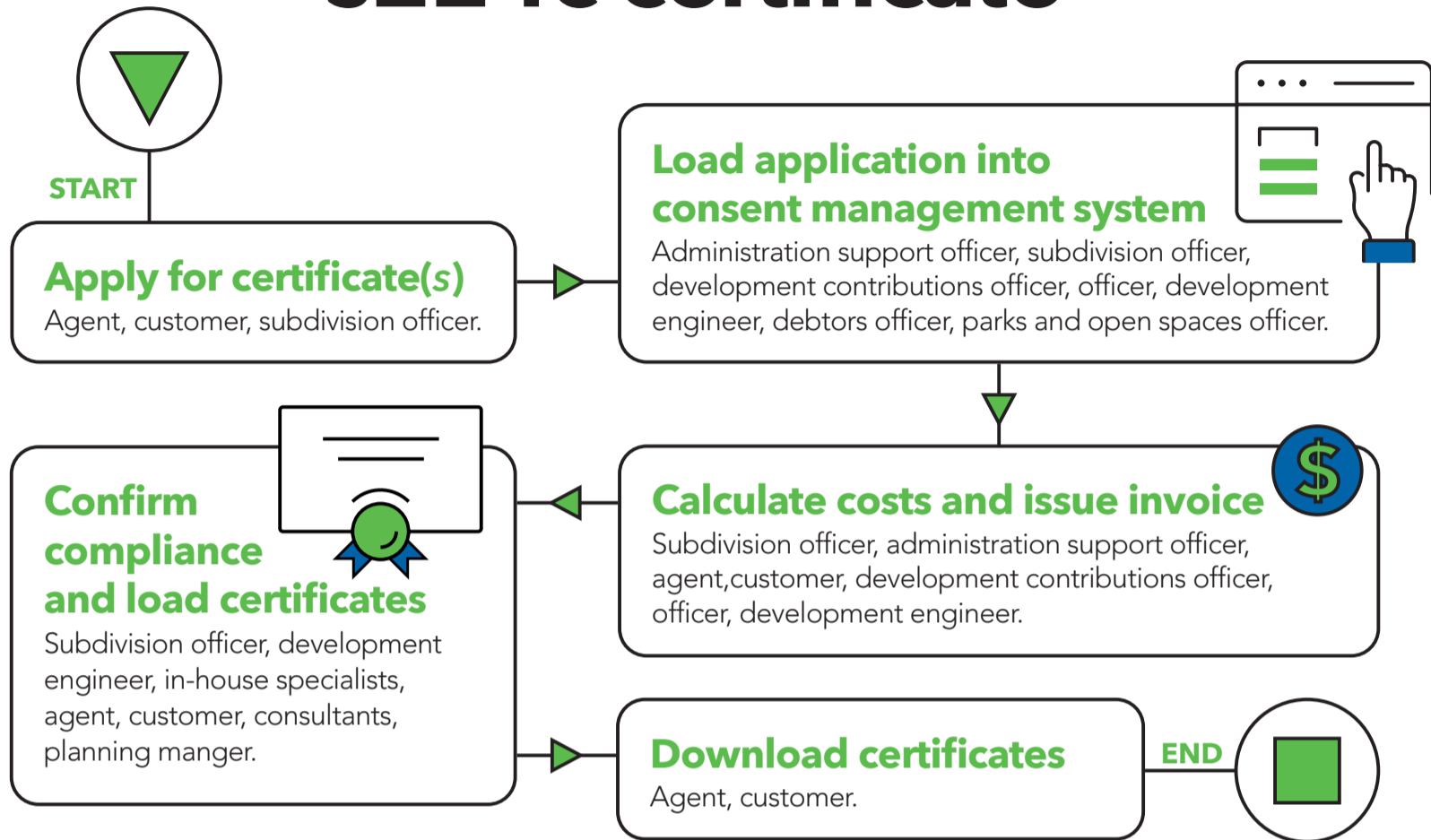
4. Connect water, wastewater and stormwater



5. Complete subdivision engineering work & obtain a works clearance



6. Confirm consent compliance and obtain s224c certificate



7. Transfer / vest assets (if required)

