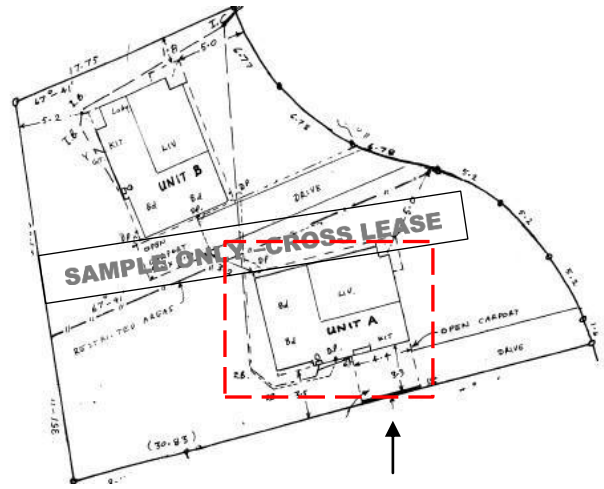
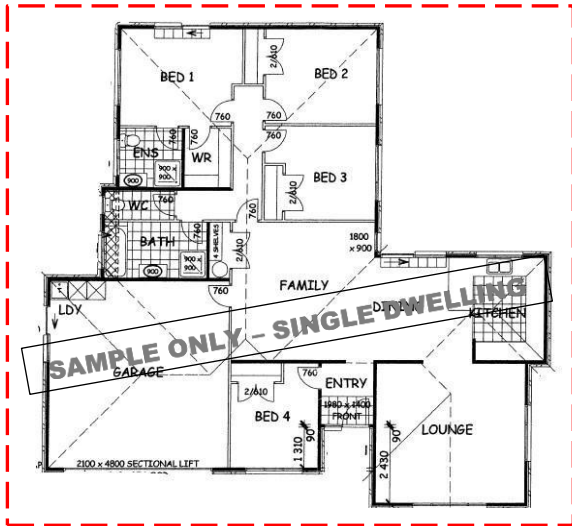


LIM application definitions

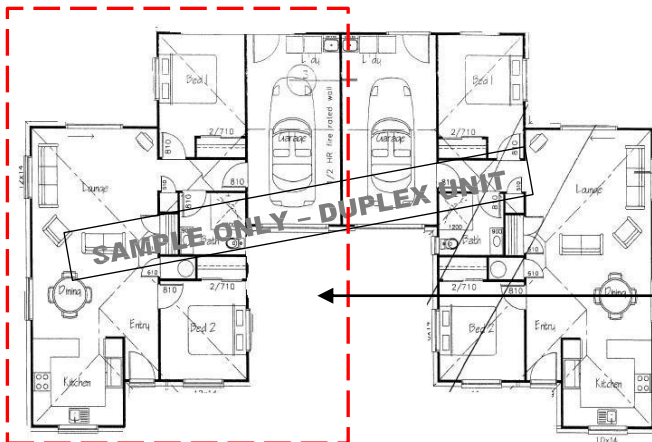
When applying for a Land Information Memorandum (LIM) there are four different options that you can apply for; Residential – single dwelling, Multi-unit, Commercial and Vacant Land. When trying to distinguish between a residential dwelling or multi-unit application please refer to the below definitions / examples. In the examples below the red dotted lines demonstrate the areas covered by the LIM. If you have any further questions please contact our Customer Services Team for assistance phone: +64 7 838 6699 (07 838 6699).

1. Residential Single Dwelling

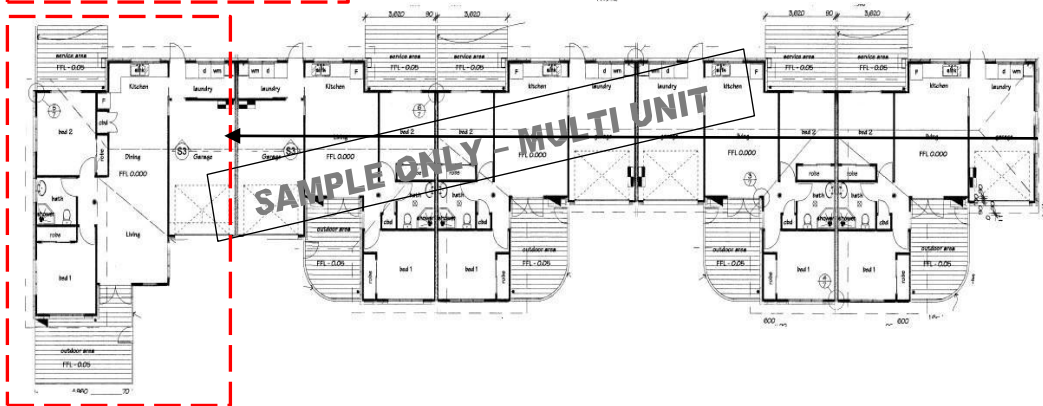
A single dwelling is a residential building designed for, and occupied exclusively by, one household. Typically this type of LIM request will only cover a single residential dwelling – see examples below.



Residential single dwelling LIM application for one unit on a cross lease property



Residential single dwelling LIM application for one unit in a duplex



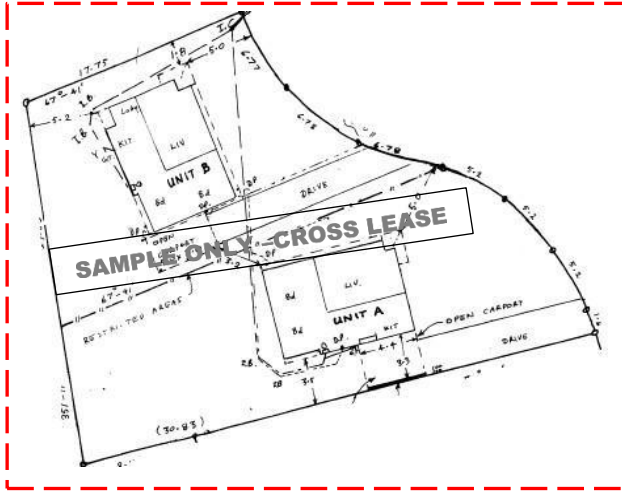
Residential single dwelling LIM application for one unit in a multi-unit block

2. Multi – Unit LIM

A Multi-unit LIM can cover a number of different scenarios. These are outlined below.

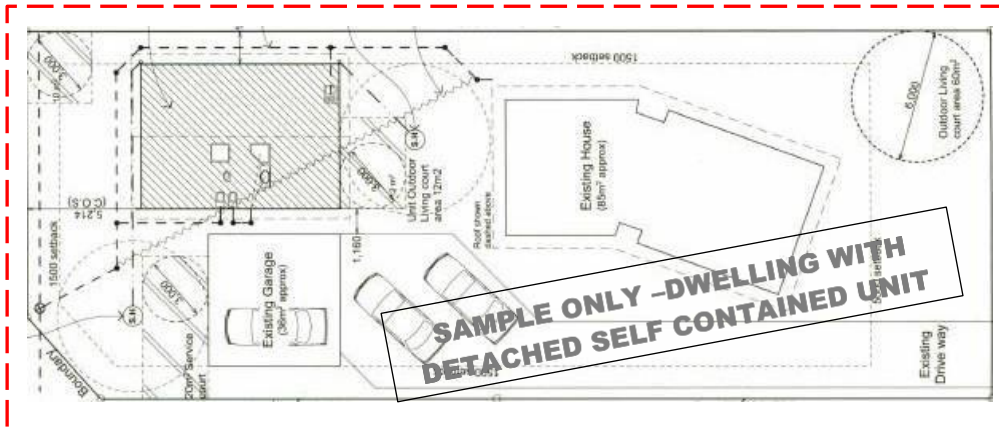
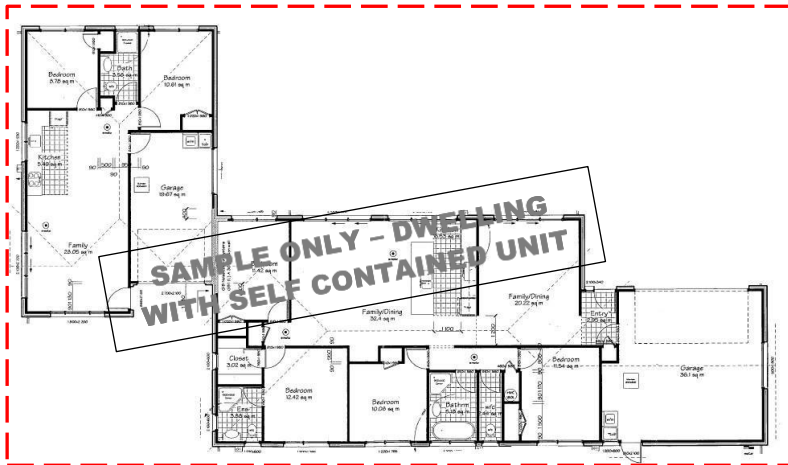
2.1. Cross lease

A cross lease is where a number of people own an undivided share in a piece of land and the homes that they build on the land are leased from the other land-owners (normally for a term of 999 years). The houses are usually flats or townhouses. Typically this type of LIM request will cover multiple dwellings on a single piece of land.



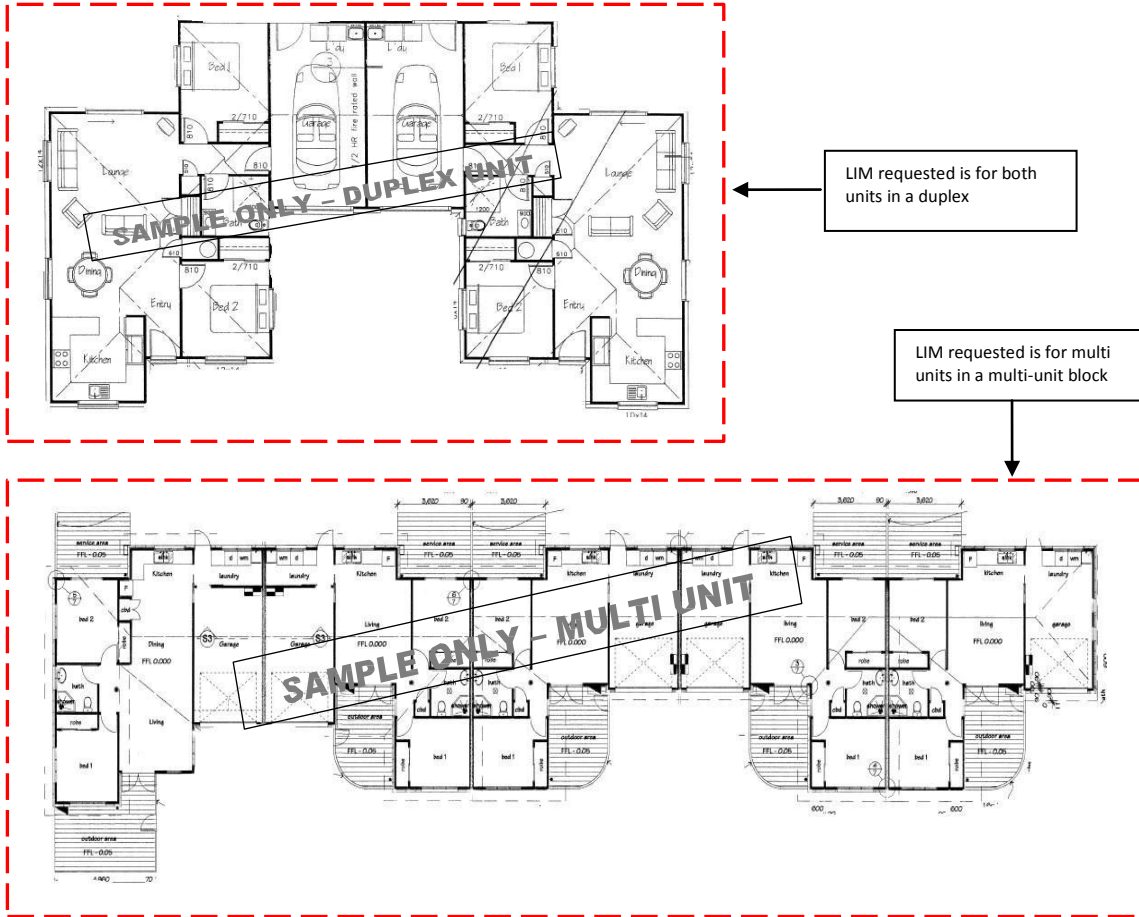
2.2. Ancillary unit

Ancillary residential units are a self-contained residential unit held in common ownership with the primary activity on the site. A residential unit is self-contained if it has a sink, a bathroom, and a bedroom or living area. The ancillary residential unit can be attached to the principal building, or be a detached stand-alone structure.



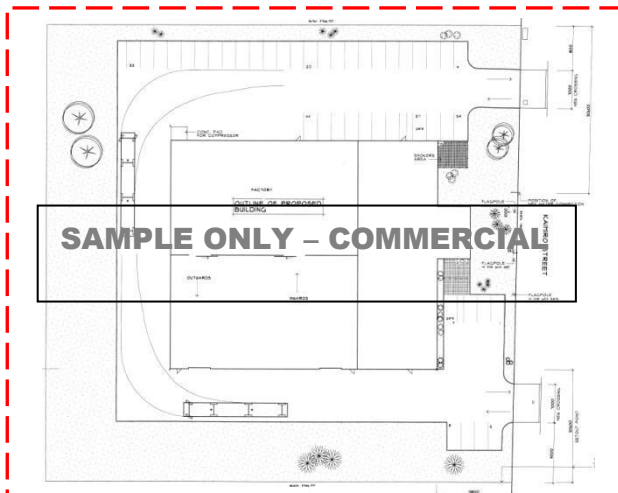
2.3. Single Buildings with several Dwellings

Multi units are often a singular building with several dwellings within it (such as an apartment block), a mixed - usage building (such as a residential flat above a commercial warehouse), or two or more dwellings that are connected by walls.



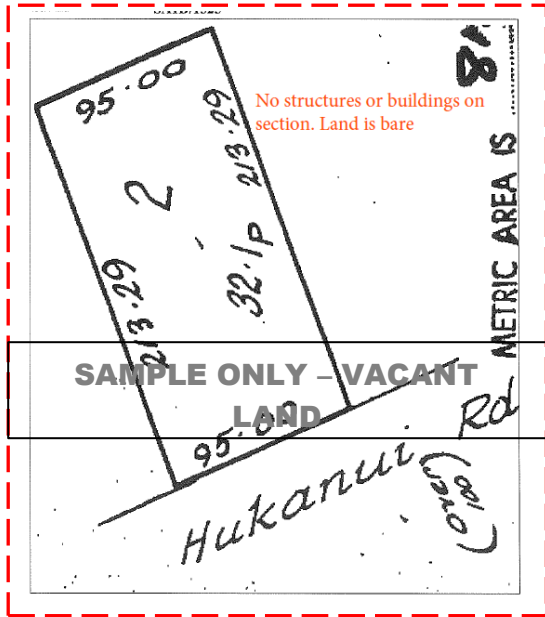
3. Commercial

Any property involving the use of premises (land and buildings) for administration or professional activities, leisure and recreation activities, community centres, places of worship, mobile accommodation, motels, retail and industrial development.



4. Vacant Land (residential / commercial)

Any property which doesn't have any buildings on it



Example where a vacant land LIM application would apply
